

**COMPRESSOR**

|                                 |                 |
|---------------------------------|-----------------|
| Displacement (cm <sup>3</sup> ) | 7.57            |
| Diameter (mm)                   | 25.4            |
| Stroke (mm)                     | 14.9            |
| Net Weight (Kg)                 | 10.1            |
| Oil type                        | ISO VG 22 ESTER |
| Oil charge (cm <sup>3</sup> )   | 300             |

**MOTOR**

|                              |           |
|------------------------------|-----------|
| Approximate Power (CV)       | 1/5       |
| Voltage/Frequency (V/Hz)     | 200V 50Hz |
| Voltage range (V)            | 170-242   |
| Code                         | 62.075    |
| Type                         | CSIR      |
| Phase number                 | 1 PH      |
| Locked rotor current (A)     | 11.0      |
| Main W. resist. at 25°C (Ω)  | 7.14      |
| Start W. resist. at 25°C (Ω) | 28.96     |

**APPLICATION**

|                         |                         |
|-------------------------|-------------------------|
| Application             | High/Mid. back pressure |
| Refrigerant             | R134a                   |
| Evaporating (°C)        | -25 to 10               |
| Expansion               | Capillar/Valve          |
| Comp. cooling           | Fan cooled              |
| Max. ambient temp. (°C) | 43                      |

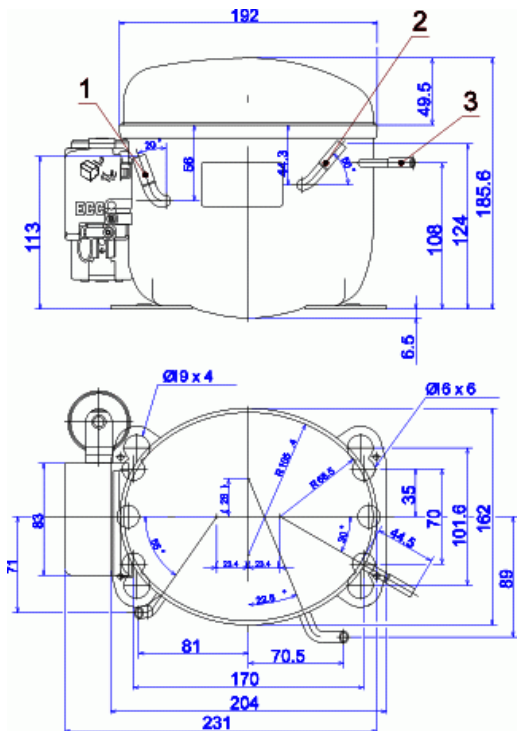
| NOMINAL PERFORMANCE       | CYCLE C | CYCLE D |
|---------------------------|---------|---------|
| Cooling capacity (kcal/h) | 476     | 570     |
| Input power (W)           | 303     | 315     |
| EER (kcal/Wh)             | 1.56    | 1.80    |
| COP (W/W)                 | 1.82    | 2.10    |
| Current (A)               | 2.03    | 2.09    |

**TEST CONDITIONS**

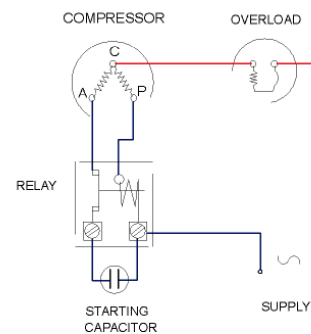
|                             |           |           |
|-----------------------------|-----------|-----------|
| Evaporating temp. (°C)      | 5.0       | 7.2       |
| Condensing temp. (°C)       | 55.0      | 55.0      |
| Liq.t. entering expan. (°C) | 55.0      | 46.0      |
| Ambient t. and return (°C)  | 32.0      | 35.0      |
| Tens/Freq (V/Hz)            | 200V 50Hz | 200V 50Hz |

**ELECTRICAL COMPONENTS**

|                                |              |              |
|--------------------------------|--------------|--------------|
| Relay                          | 2014 135.    |              |
| Pick-Up (A)                    | 5,80         |              |
| Drop-Out (A)                   | 4,95         |              |
| Protector                      | MRA38139     | T0269/G.     |
| Current (A)                    | 10.3         | 9.6          |
| Time check (seg)               | 7.5-14       | 7.5-14       |
| Disc temp. (Open/Close) (°C)   | 105.0 / 52.0 | 105.0 / 52.0 |
| Starting capacitor (μF/V)/F/V) | 47- 56 / 330 |              |

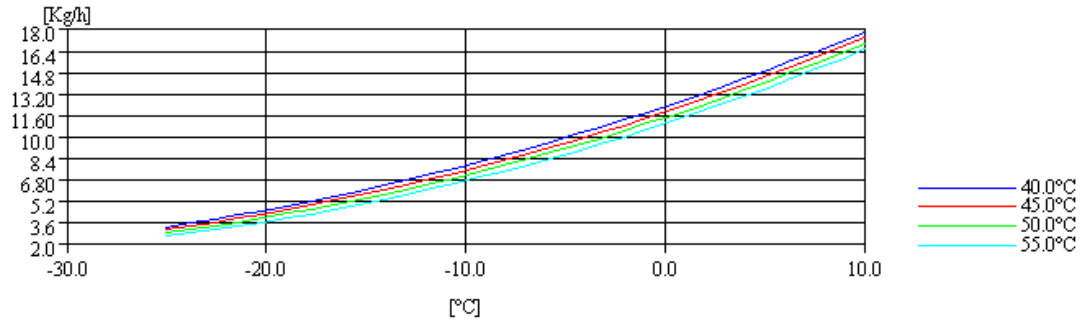
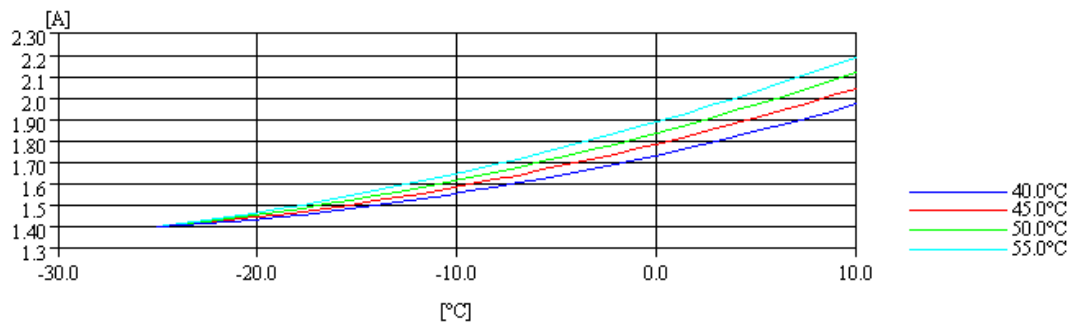
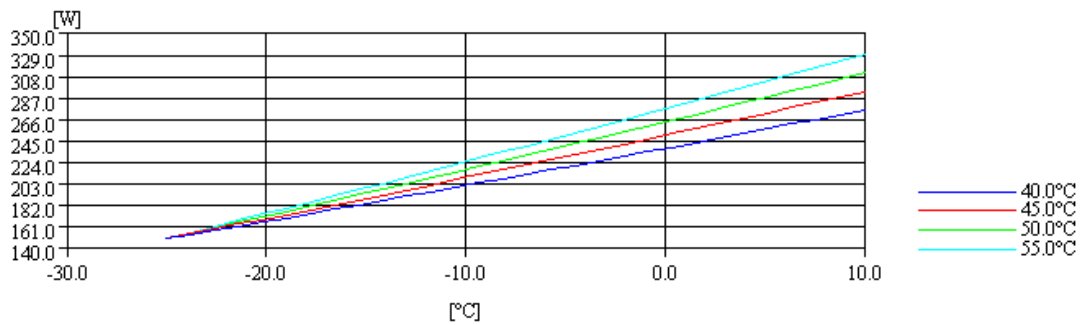
**DIMENSIONS AND ELECTRICAL DIAGRAM**


| DESIGNATION | INTERNAL DIAM. (MM) |
|-------------|---------------------|
| 1           | Suction/Service 6,5 |
| 2           | Service/Suction 6,5 |
| 3           | Discharge 4,9       |

**CSIR**


**TEST CONDITIONS**

|                        |                |
|------------------------|----------------|
| Voltage/frequency      | 200V 50Hz      |
| Ambient t. and return  | 35 °C          |
| Liq.t. entering expan. | Subcooling 9 K |

**MASS FLOW**

**INTENSITY**

**CONSUMPTION**

**COOLING CAPACITY**
